

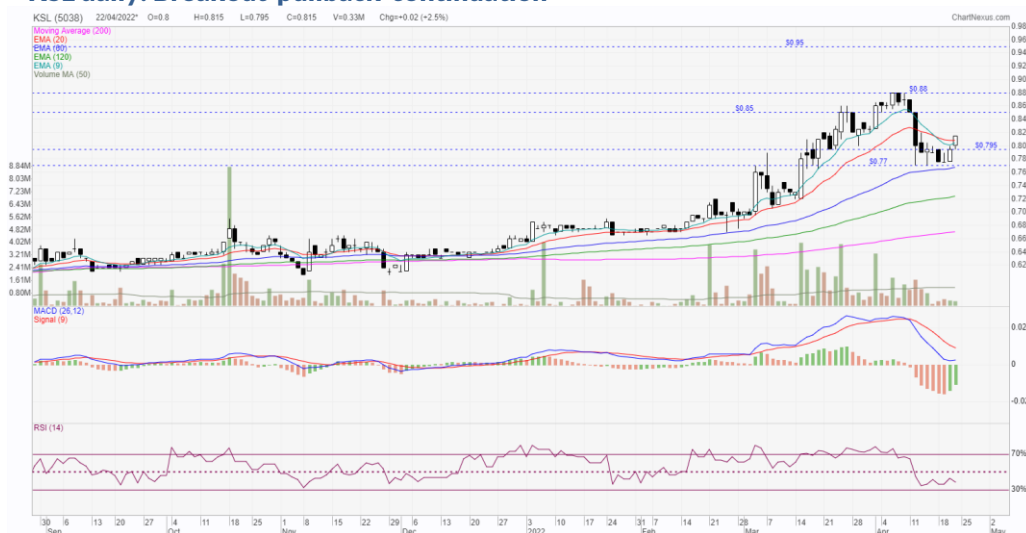
KSL Holdings Bhd

Kenneth Leong
kennethleong@msec.com.my
(603) 2201 2100

Benefitting from re-opening of borders

- More than 30 years of experience in the property development sector, primarily in Johor and has expanded into Klang Valley in recent years.
- Development of KSL Esplanade Mall that has a gross development value of RM600.0m will house more than 300 shops on 650,000 net lettable area and 3,000 parking bays may attract crowds from neighboring districts.
- Operates in a healthy balance sheet in FY21 with a net cash position of RM145.1m, translating to net cash per share of 14.0 sen (c.17.2% of share price).
- Technically, price has recovered above EMA20 and may trend higher to target the next resistances at RM0.85-0.88 with long term target set at RM0.95.

KSL daily: Breakout-pullback-continuation



M+ Wiz

Trading Catalyst

- KSL Holdings Bhd (KSL) has established for more than 30 years of experience in the property development sector, primarily in Johor and has since expanded into Klang Valley in recent years. Its flagship development; Canary Garden @ Bandar Bestari carries a gross development value of RM5.00bn sits on 448.0-ac located Klang.
- Moving forward, the development of KSL Esplanade Mall located at Klang that has a gross development value of RM600.0m is still in progress. Upon completion, it will house more than 300 shops on 650,000 net lettable area and 3,000 parking bays, may attract crowds from neighboring districts.
- The re-opening of borders also bodes well for KSL in terms of their property launches as well as potential improvement in traffic footfall in KSL City Mall. As of FY21, KSL operates in a healthy balance sheet with a net cash position of RM145.1m, translating to net cash per share of 14.0 sen (c.17.2% of share price).

KSL HOLDINGS BHD

Last Price (RM)	0.815
5 Day Change (%)	2.5
1 Day Range Percentile (%)	100.0
5 Day Range Percentile (%)	100.0
52Week Range Percentile (%)	80.3
Volatility 30D	41.0
EMA9, EMA20, EMA60 Trend	Consolidation
Price vs. EMA20 (%)	0.9
DMI DI+	22.7
DMI DI-	27.7
ADX	31.7
Price Skew	UP
RSI 14D	37.8
RSI OB/OS	Negative
Price vs. Bollinger Band (%)	41.4

Bloomberg

Financial snapshot

FYE Dec	FY19	FY20	FY21
Revenue (RM m)	712.2	340.7	457.6
Net profit (RM m)	249.9	-63.5	109.7
Shares (m)	1017.2	1017.2	1017.2
EPS (sen)	24.6	-6.2	10.8
DPS (sen)	-	-	-
P/E (x)	3.3	-	7.6
DY (%)	-	-	-

Bloomberg

Technical Outlook

- Technically, price is still on the uptrend formation since December 2021. Price has subsequently staged a mild pullback in recent weeks towards near EMA60 before a recovery takes shape. With price recovering back above EMA20, price may trend higher to target the next resistances at RM0.85-0.88 with long term target set at RM0.95. Support is pegged at RM0.77 and cut loss is located at RM0.765.

Glossary

Last Price (RM)	Last closing price
5 Day Change (%)	Percent change in price over the last five days. The formula is: [(Last Trade - Closing Price Five Days Ago) / Closing Price Five Days Ago] x 100.
1 Day Range Percentile (%)	Calculates the percentile value within the 1-day range
5 Day Range Percentile (%)	Calculates the percentile value within the 5-day range
52 Week Range Percentile (%)	Calculates the percentile value within the 52-week range
Volatility 30D	A measure of the risk of price moves for a security calculated from the standard deviation of day-to-day logarithmic historical price changes. The 30-day price volatility equals the annualised standard deviation of the relative price change for the 30 most recent trading days closing price, expressed as a percentage.
EMA9, EMA20, EMA60 Trend	If EMA9 is greater than EMA20 and EMA20 is greater than EMA60 it will be stated as Uptrend. If the EMA9 is lesser than EMA20 and the EMA20 is lesser than EMA60, it will be stated as Downtrend, otherwise Consolidation.
Price vs. EMA20 (%)	Position of the price away from the EMA20 level
DMI DI+	Positive directional movement.
DMI DI-	Negative directional movement.
ADX	ADX is a moving average of the directional movement index.
Price Skew	If the average of 20 days closing price is greater than 20 days Median price, it will be stated Up. If the average of 20 days closing price is lower than 20 days Median price, it will be stated Down.
RSI 14D	RSI measures the momentum of a security to determine whether it is in an overbought or oversold condition. If RSI 14 days is greater or equal to 70, it will be stated Overbought.
RSI OB/OS	If the RSI 14 days is greater or equal to 50, but lower than 70, it will be stated Positive. If the RSI 14 days is greater than 30, but lower than 50, it will be stated Negative. If the RSI 14 days is lower or equal to 30, it will be stated Oversold.
Price vs. Bollinger Band (%)	Position of the price compare to the Bollinger band in percentage
